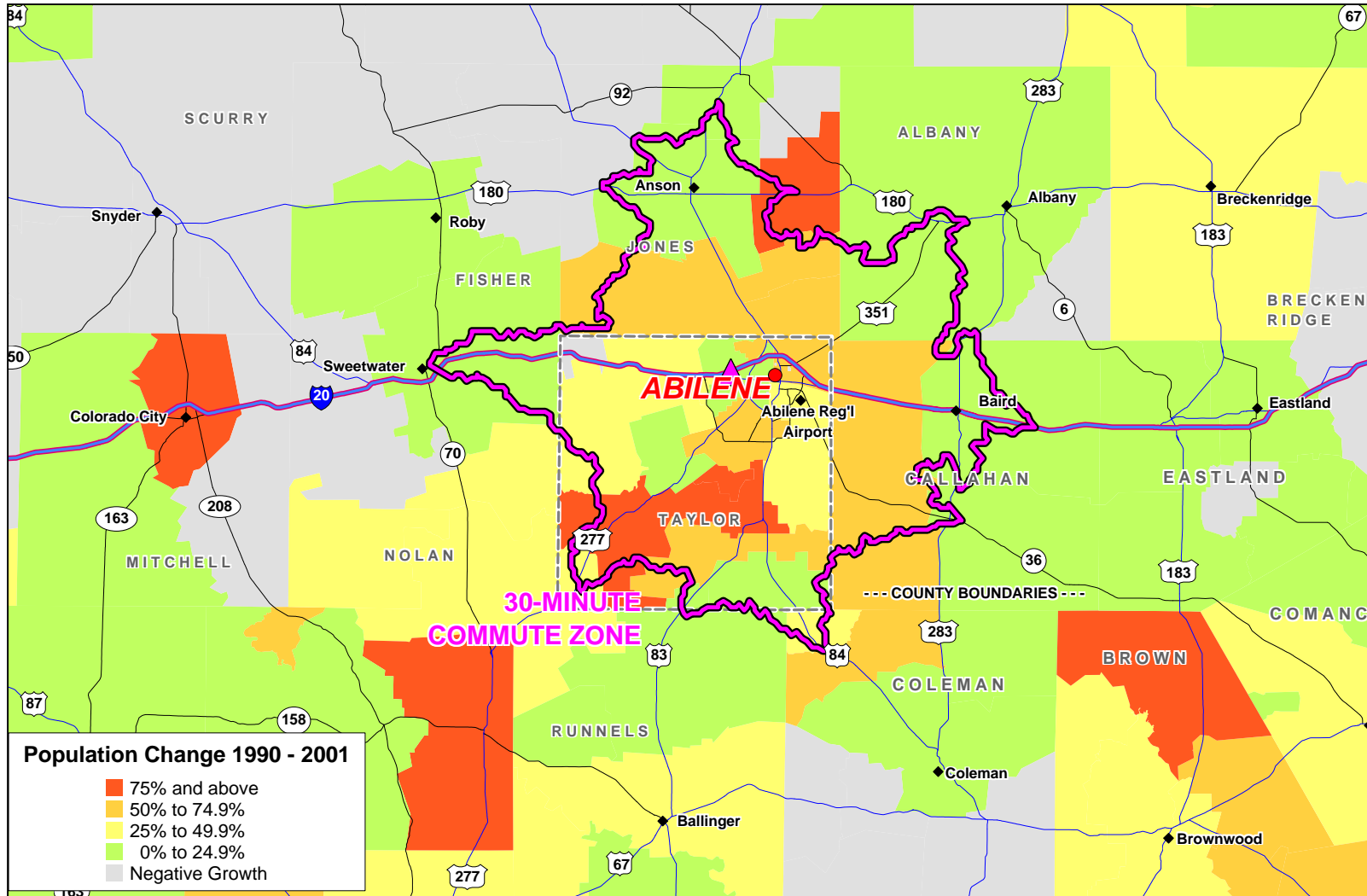
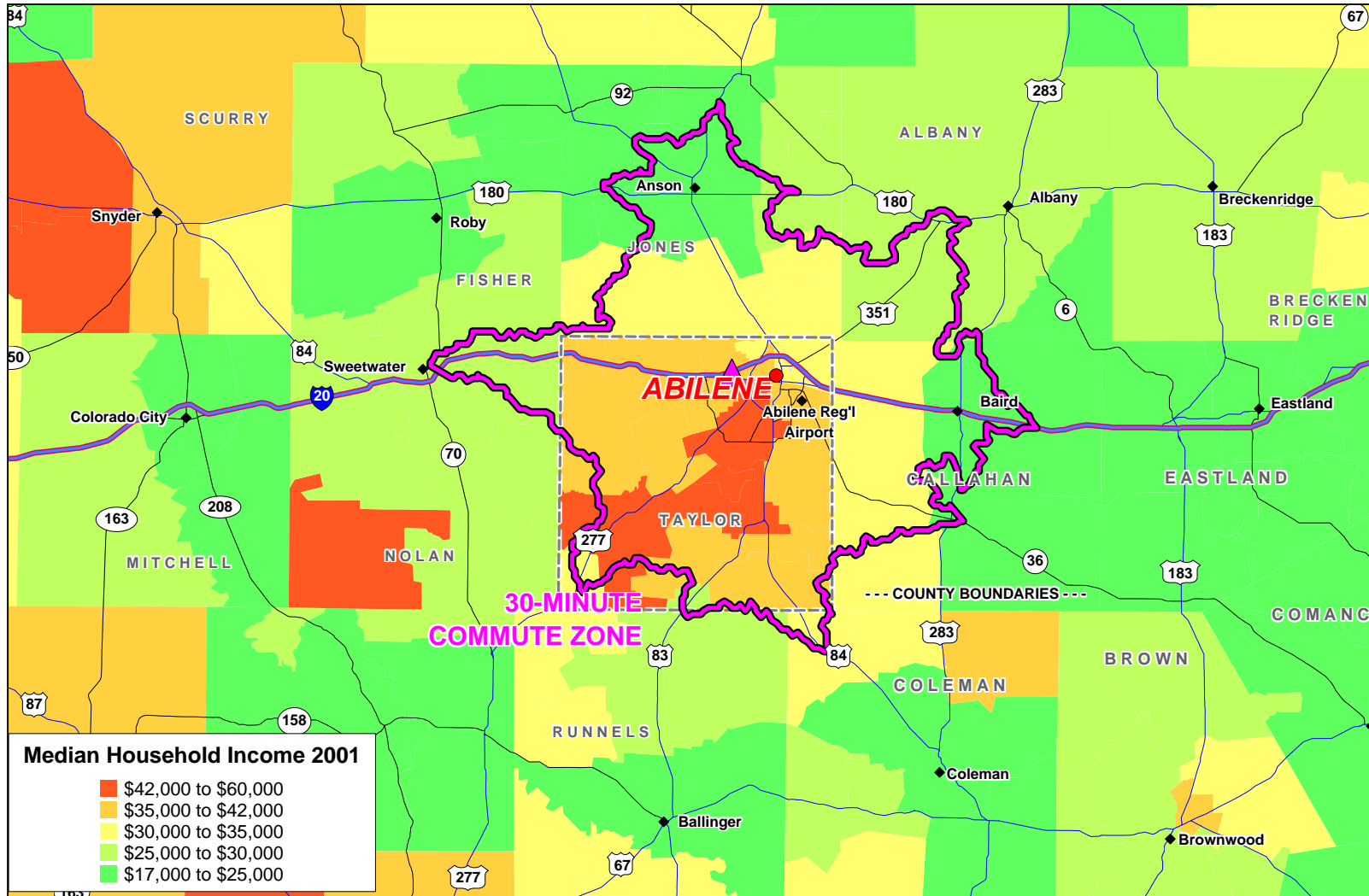


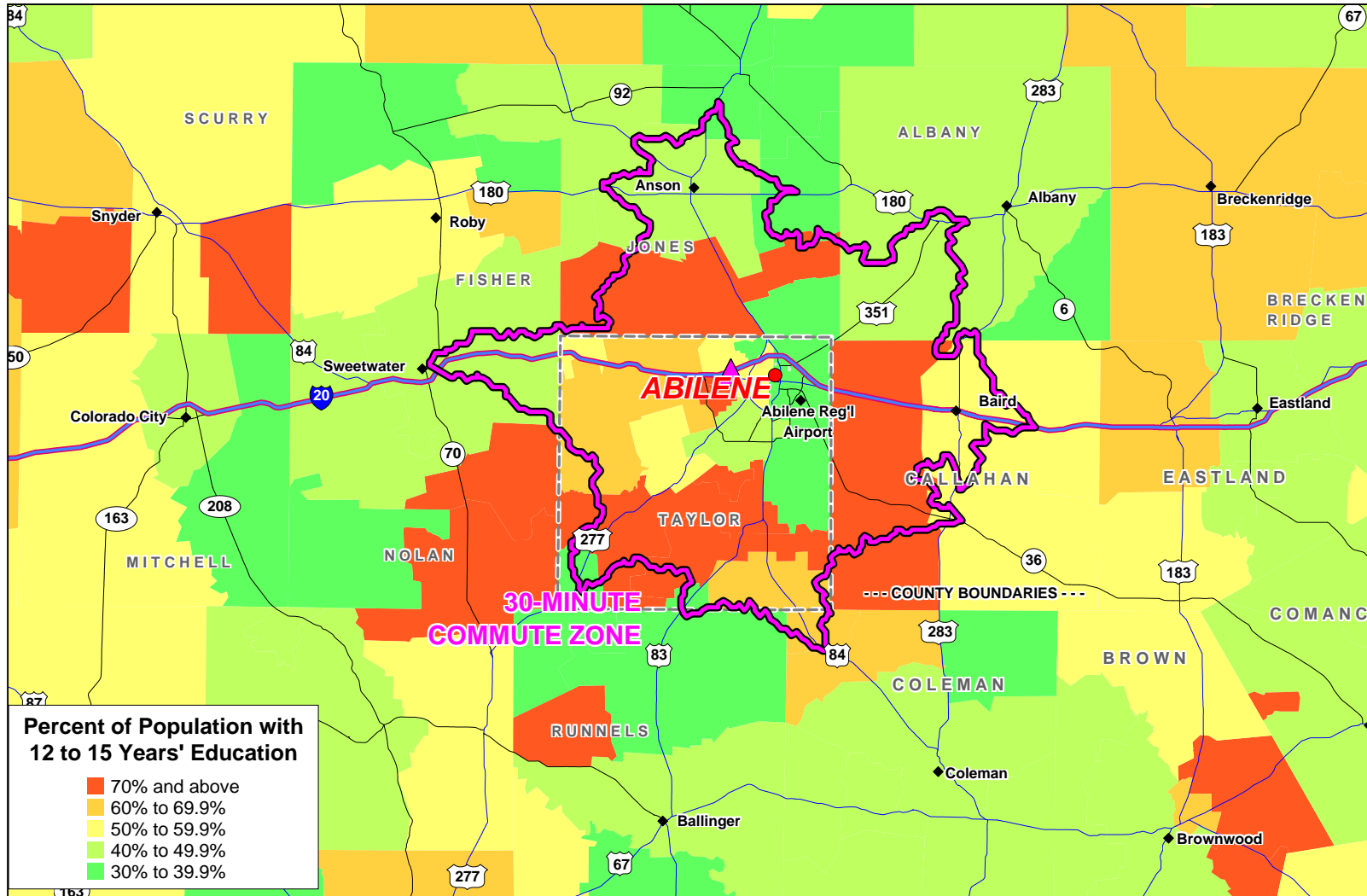
**EXHIBIT A-1
 ABILENE/TAYLOR COUNTY
 PROJECTED POPULATION CHANGE 1990-2001 BY ZIP CODE
 30-MINUTE COMMUTE ZONE FROM 6450 FIVE POINTS PARKWAY, ABILENE, TX**



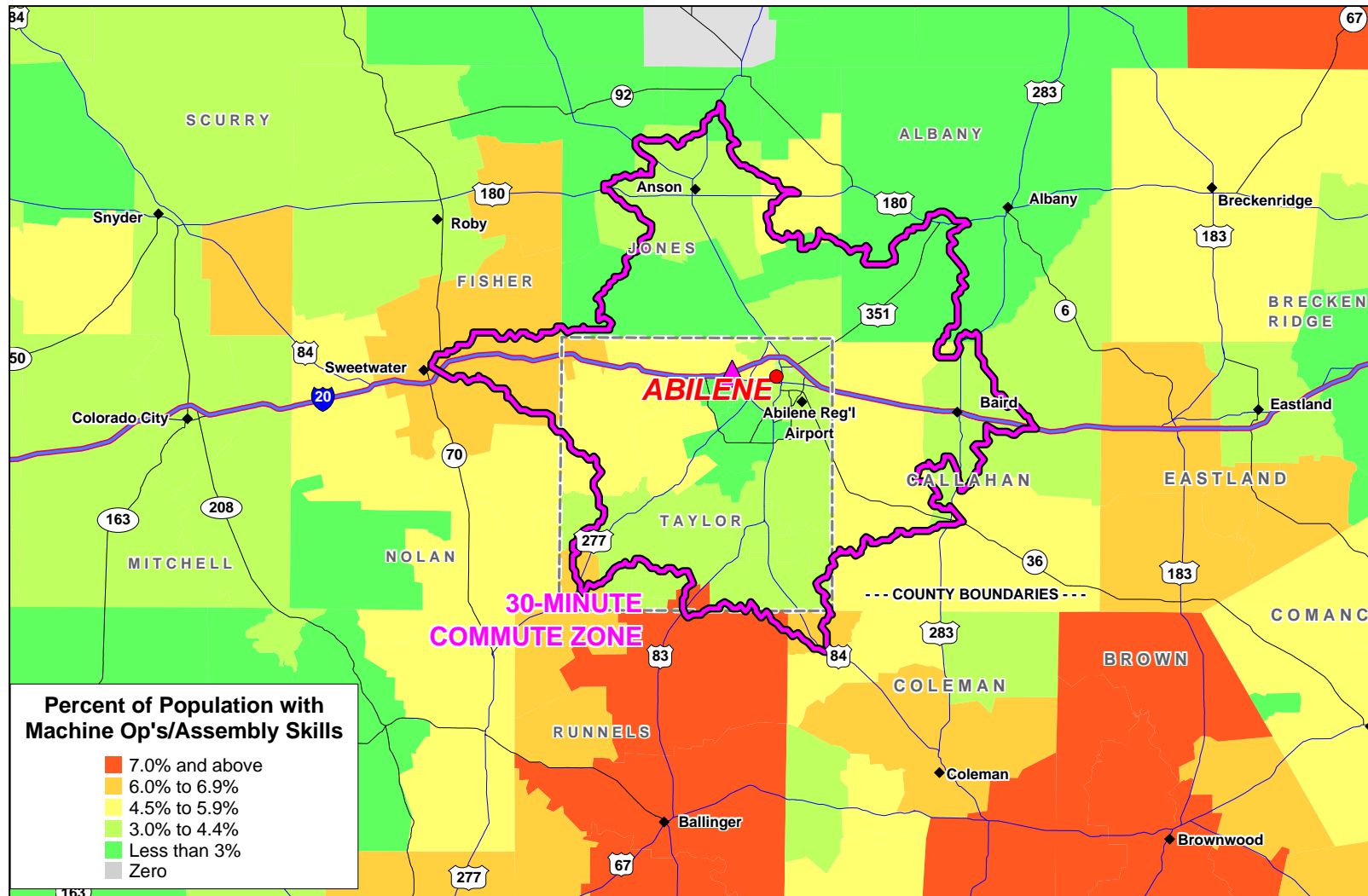
**EXHIBIT A-2
 ABILENE/TAYLOR COUNTY
 MEDIAN HOUSEHOLD INCOME BY ZIP CODE
 30-MINUTE COMMUTE ZONE FROM 6450 FIVE POINTS PARKWAY, ABILENE, TX**



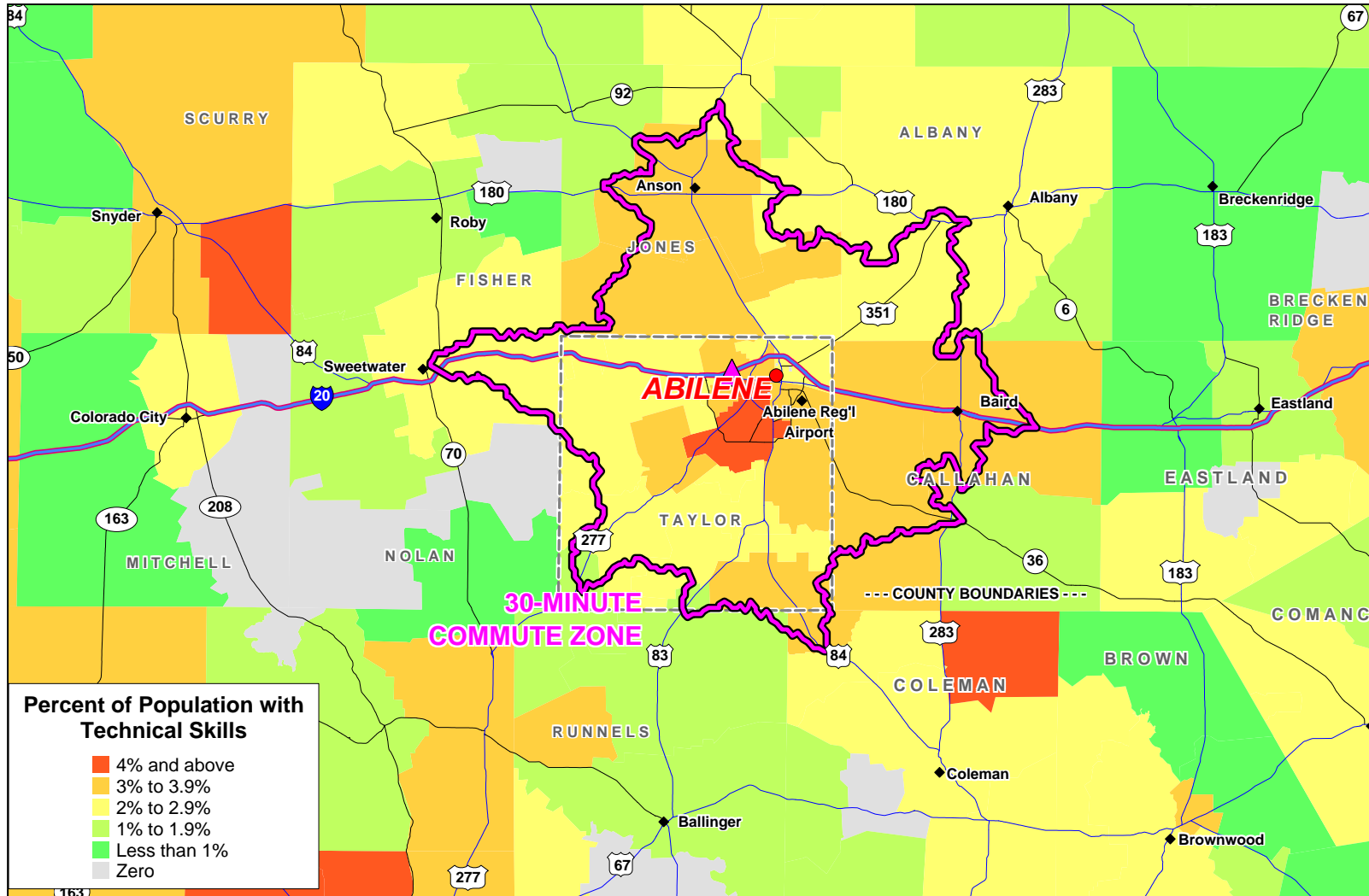
**EXHIBIT A-3
 ABILENE/TAYLOR COUNTY
 DISTRIBUTION OF POPULATION WITH 12-15 YEARS EDUCATION BY ZIP CODE
 30-MINUTE COMMUTE ZONE FROM 6450 FIVE POINTS PARKWAY, ABILENE, TX**



**EXHIBIT A-4
 ABILENE/TAYLOR COUNTY
 DISTRIBUTION OF POPULATION WITH MACHINE OPERATION/ASSEMBLY SKILLS BY ZIP CODE
 30-MINUTE COMMUTE ZONE FROM 6450 FIVE POINTS PARKWAY, ABILENE, TX**



**EXHIBIT A-5
 ABILENE/TAYLOR COUNTY
 DISTRIBUTION OF POPULATION WITH TECHNICAL SKILLS BY ZIP CODE
 30-MINUTE COMMUTE ZONE FROM 6450 FIVE POINTS PARKWAY, ABILENE, TX**



**EXHIBIT A-6
 ABILENE/TAYLOR COUNTY
 DISTRIBUTION OF POPULATION WITH CLERICAL SKILLS BY ZIP CODE
 30-MINUTE COMMUTE ZONE FROM 6450 FIVE POINTS PARKWAY, ABILENE, TX**

